

# CipherLab User Guide

ScanMaster Web for Scanner Configuration

For 22/25 Series Barcode Scanners:

Version 1.02



Copyright © 2017~2018 CIPHERLAB CO., LTD.  
All rights reserved

The software contains proprietary information of CIPHERLAB CO., LTD.; it is provided under a license agreement containing restrictions on use and disclosure and is also protected by copyright law. Reverse engineering of the software is prohibited.

Due to continued product development this information may change without notice. The information and intellectual property contained herein is confidential between CIPHERLAB and the client and remains the exclusive property of CIPHERLAB CO., LTD. If you find any problems in the documentation, please report them to us in writing. CIPHERLAB does not warrant that this document is error-free.

No part of this publication may be reproduced, stored in a retrieval system, or transmitted in any form or by any means, electronic, mechanical, photocopying, recording or otherwise without the prior written permission of CIPHERLAB CO., LTD.

For product consultancy and technical support, please contact your local sales representative. Also, you may visit our web site for more information.

The CipherLab logo is a registered trademark of CIPHERLAB CO., LTD.

All brand, product and service, and trademark names are the property of their registered owners.

The editorial use of these names is for identification as well as to the benefit of the owners, with no intention of infringement.

**CIPHERLAB CO., LTD.**

Website: <http://www.cipherlab.com>

# RELEASE NOTES

---

Version	Date	Notes
1.02	Jan. 10, 2018	Modified: Models of 22 Series included
1.01	Oct. 12, 2017	Modified: Screenshots and descriptions updated
1.00	Mar. 28, 2017	Initial release

# CONTENTS

---

- RELEASE NOTES..... - 3 -**
- INTRODUCTION..... 1**
  - System Requirements..... 2
  - Using ScanMaster Web..... 3
  - Command Menu ..... 3

# INTRODUCTION

---

ScanMaster Web, the web-based application having the same functionality as the desktop version, is designed with client-server architecture that makes it easier to configure CipherLab barcode scanners via accessing CipherLab's web site. It provides two ways for users to configure the scanners – (1) send the settings from your computer to the scanners by direct communication, or (2) generate and print out the setup barcodes for the scanners to read anytime anywhere to configure itself or restore the defaults.

This user guide contains information on using ScanMaster Web. We recommend that you read it thoroughly before use and keep it at hand for quick reference.

Thank you for choosing CipherLab products!

**SYSTEM REQUIREMENTS**

As ScanMaster Web can be run in a web browser, users could use platforms as follows:

- ▶ Windows
- ▶ Mac
- ▶ Android
- ▶ iOS

	Windows	Mac	Android	iOS
UI Configuration	√	√	√	√
Setup Barcode Generation	√	√	√	√
Save/Load Setting File	√	√	√	
Read/Write Scanner Setting via Virtual COM	√			

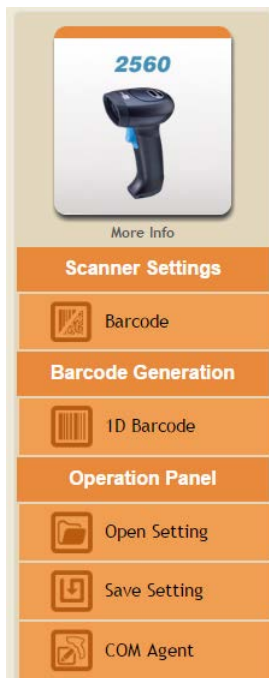
## USING SCANMASTER WEB

To access ScanMaster Web, please type <http://scanmaster.cipherlab.com/> into the address bar of your browser. Once on the ScanMaster web page, click any of the scanner pictures to proceed with the configuration. Or click **Open Setting File** to locate and open an existing configuration file.



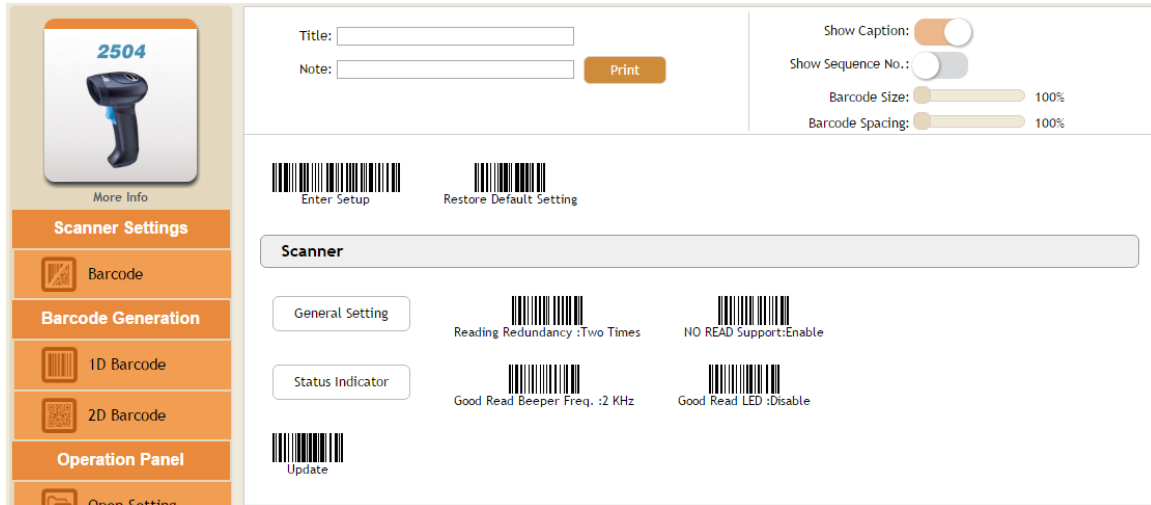
## COMMAND MENU

After selecting a specific model, you'll see a command menu displayed on the left-hand side.

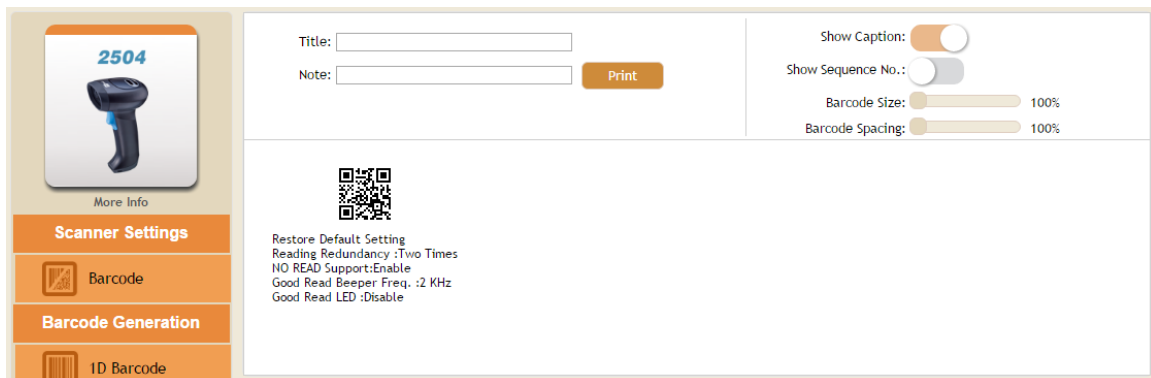


## BARCODE GENERATION

After you've changed the settings, click this command to generate setup barcodes for printing. For 2D scanners, a **2D Barcode** option also presents.



1D Setting Barcodes Generation



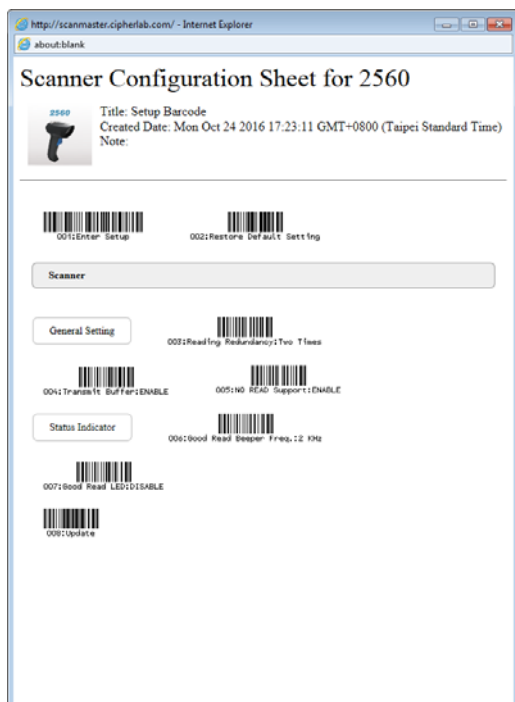
2D Setting Barcodes Generation

**Title:** Users can enter up to 50 characters to give the title of the setup barcodes.

**Note:** Enter up to 50 characters to note the purpose of the setup barcodes.

**Print:** Click the Print button to print the setup barcodes which differ from default settings (as the picture illustrated below).





**Show Caption No.:** Enable to show the caption of each setup barcode.

**Show Sequence No.:** Enable to label each setup barcode with a number to clarify the steps.

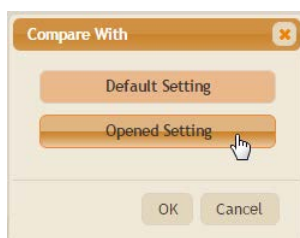
**Barcode Size:** Drag the scroll bar to adjust the barcode size with each increment of 100 in percentage Up to 300%.

**Barcode Spacing:** Drag the scroll bar to adjust the barcode spacing with each increment of 100 in percentage up to 500%.

Note: With an existing setting file opened, a dialog will appear when you click the "1D Barcode" or "2D Barcode" button.

Click Default Setting to display the loaded setting barcodes which have been changed by comparing them with default settings.

Click Opened Setting to display the loaded setting barcodes which have been changed by comparing them with the originally loaded settings.



## OPERATION PANEL

The Operation Panel includes Open Setting, Save Setting, and COM Agent commands.

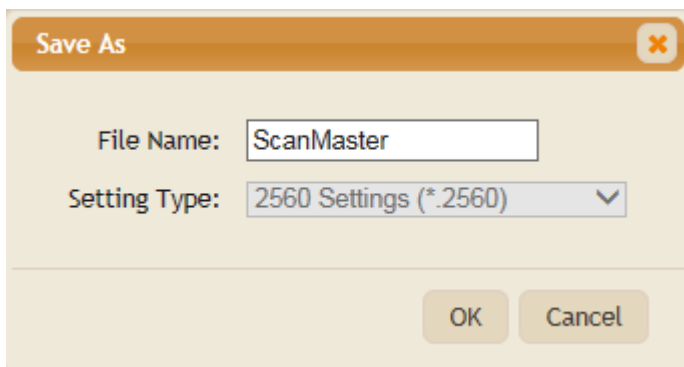
### OPEN SETTING

Click it to locate and open an existing setting file.



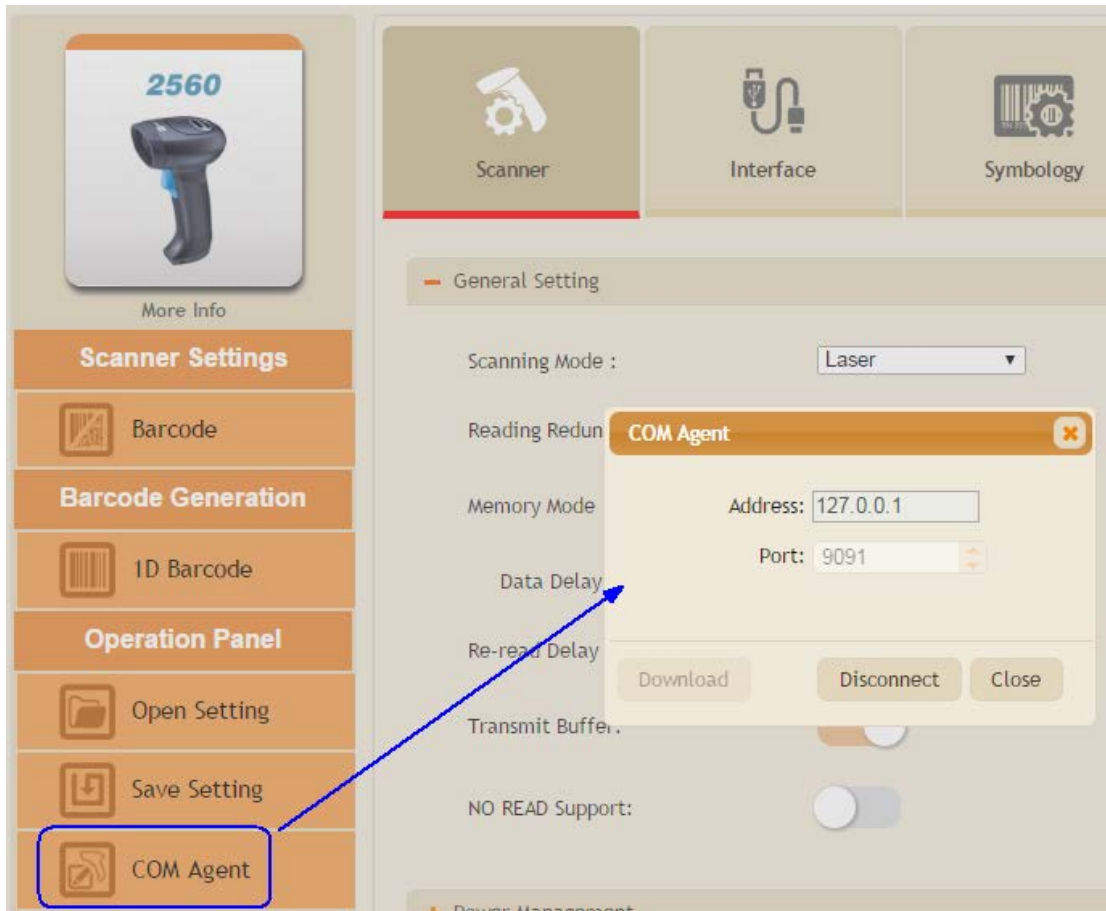
### SAVE SETTING

Click it to save the current settings to a setting file. Users can specify the file name in the File Name text field.

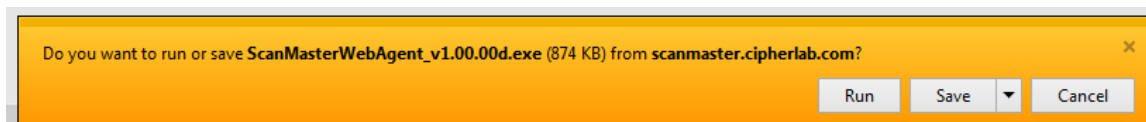


## COM AGENT

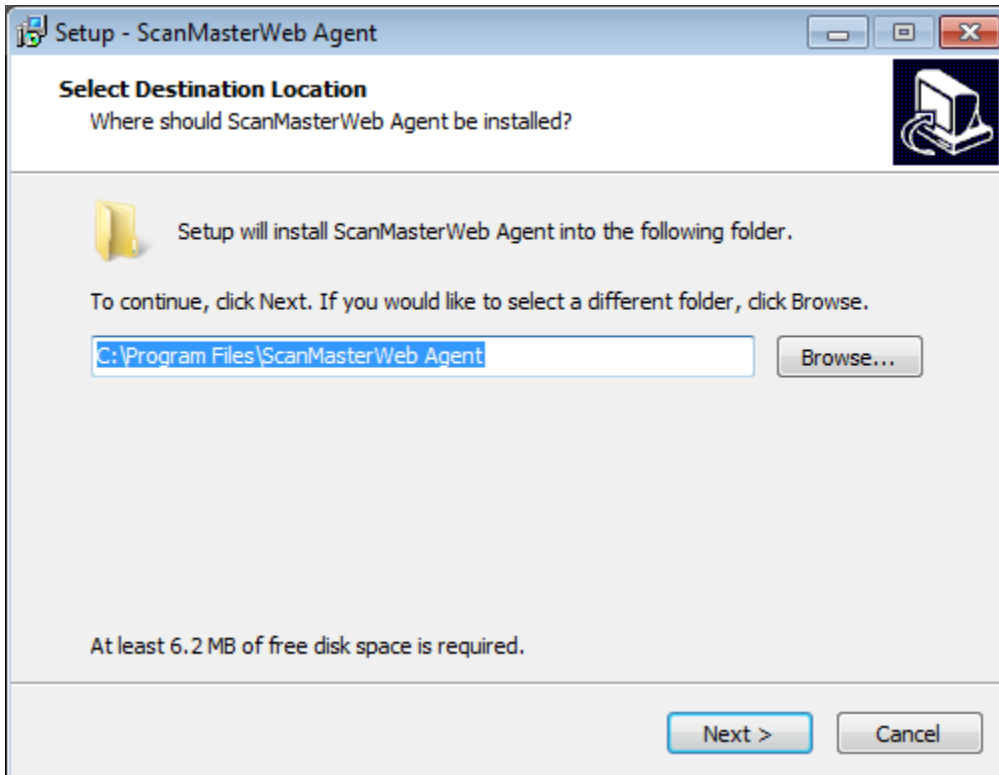
The COM Agent is supposed to be installed to your computer before you can make a connection between your PC and the scanner to be configured. Click the COM Agent to bring up the dialog; then click the **Download** button for the first time.



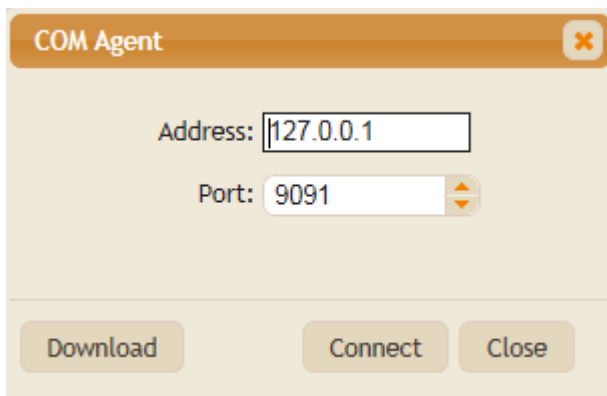
Then a message dialog appears at the bottom of the window. Click **Run** or **Save** to proceed in accordance with your plan.



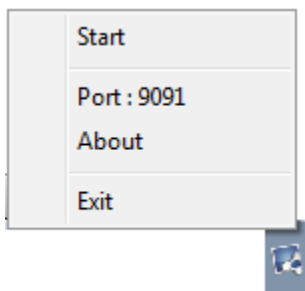
With a successful download, run the setup file to install **ScanMaster Agent**. Follow the instructions to complete the installation.

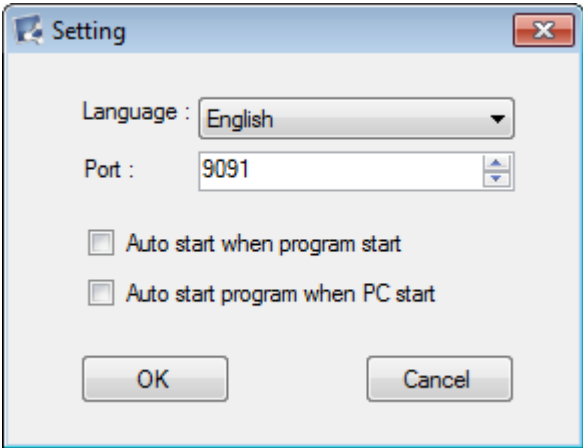
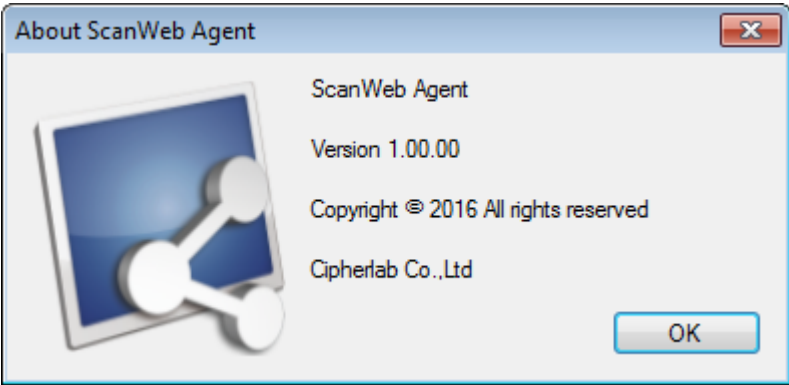


After COM Agent is successfully installed on your computer, click the **Connect** button to make a connection between your PC and the scanner.



**ScanWeb Agent** is a Windows service running in the background. Once launched in background, you can find its icon in the bottom-right corner of the screen. Right-click the icon as the picture shown below to bring up the menu.



Command	Action
<i>Start/Stop</i>	Click it to start/stop the service.
<i>Port:</i>	<p>Click it to bring up the Setting dialog.</p>  <ul style="list-style-type: none"> <li>▶ <b>Language:</b> Click to select a display language from the drop-down menu.</li> <li>▶ <b>Port:</b> Specify the port number.</li> <li>▶ <b>Auto start when program start:</b> Check it to have the service start automatically when ScanMaster Agent is launched.</li> <li>▶ <b>Auto start program when PC start:</b> Check it to launch ScanMaster Agent when your PC starts.</li> </ul>
<i>About</i>	<p>Click it to check the ScanWeb Agent version.</p> 
<i>Exit</i>	Click it to terminate ScanMaster Agent.

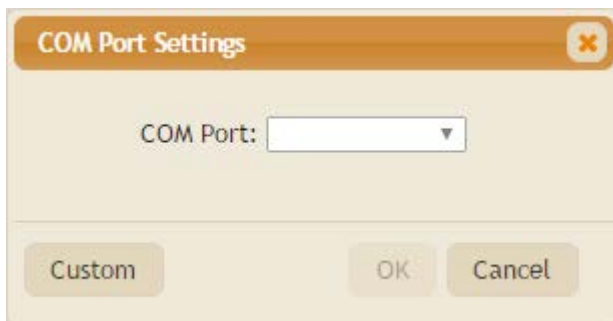
## DEVICE PANEL

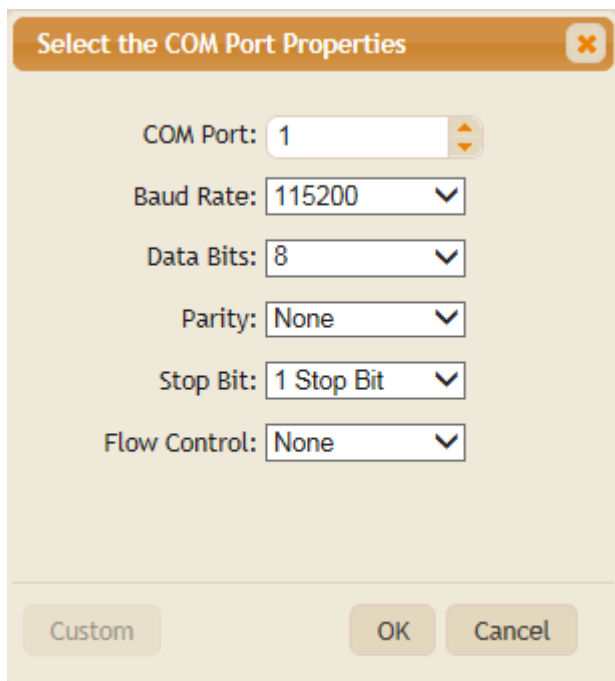
After the ScanWeb Agent service starts, the Device Panel and its command options appear on the left-hand side.



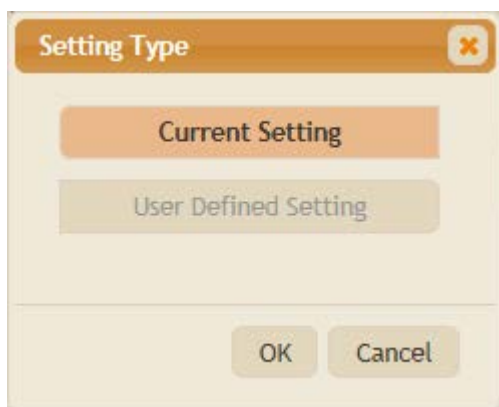
## READ SETTING

Click it to proceed with Setting Type. If two or more scanners are connecting to PC (users have to determine which scanner to be read from) or the connected scanner model doesn't match the model name selected, the COM port properties dialog shows up; then click Custom to proceed for detailed port settings.

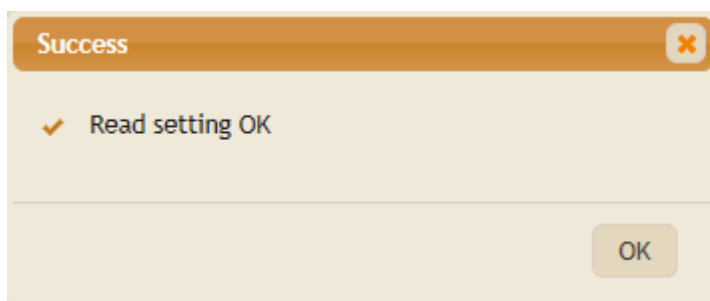




Select the setting type between Current Setting and User Defined Setting.



After reading settings successfully, the success dialog appears.



**WRITE SETTING**

Click the Write Setting command to download settings to the scanner. When the writing is successful, the success dialog appears.

